

Venice Boulevard Safety & Mobility Project

Venice Boulevard, Lincoln Blvd- National Blvd

August 2022



Presentation Agenda

1. Background
2. Project Area
3. Existing Conditions
4. Possible Configuration
5. Timeline and Community Engagement
6. Questions & Discussion



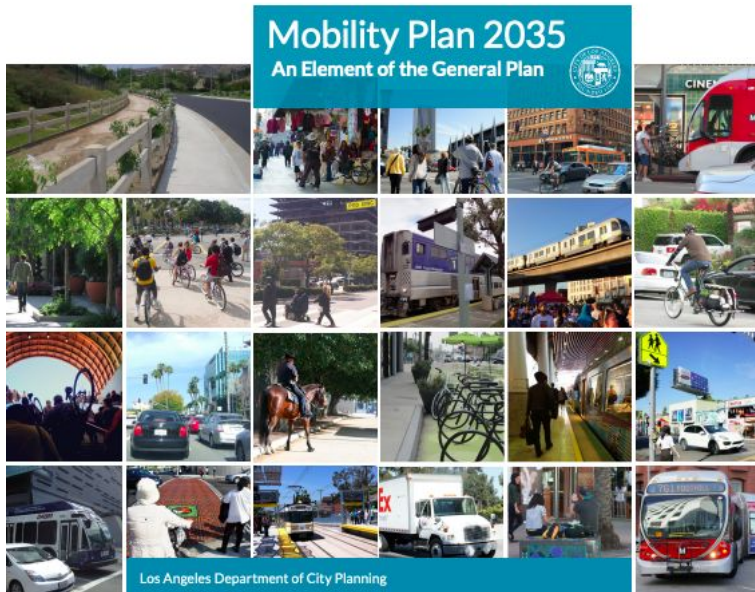
Background



Background



LOS ANGELES | 2015-2025

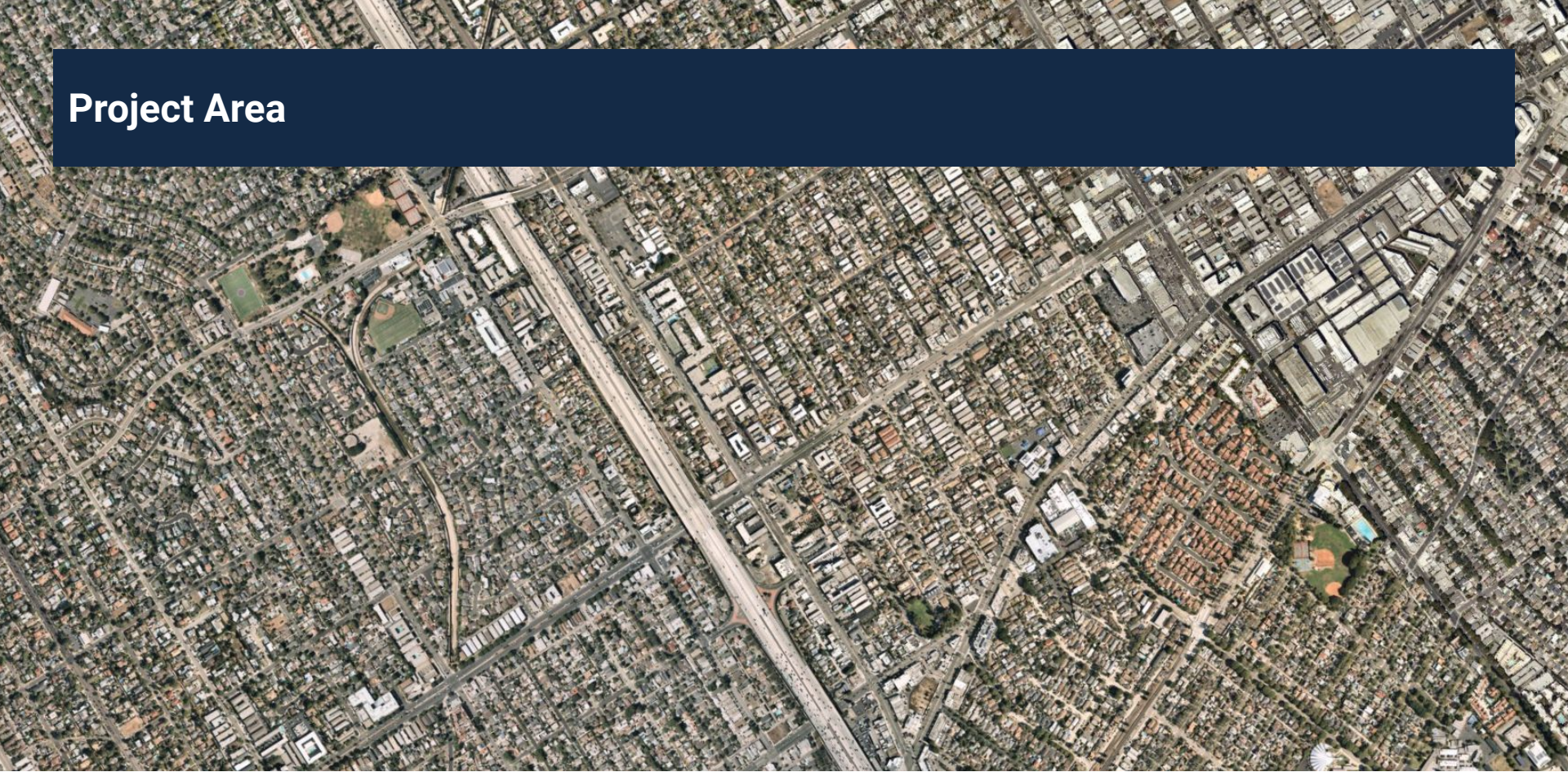


Venice Blvd Opportunities & Objectives

- Improve traffic safety and reduce fatalities and severe injuries
- Enhance connectivity to jobs, social services, transit and community resources
- Provide alternative modes of transportation (bike, walk, roll, transit)
- Prioritize buses to improve travel times and reliability
- Increase access to Metro E-Line



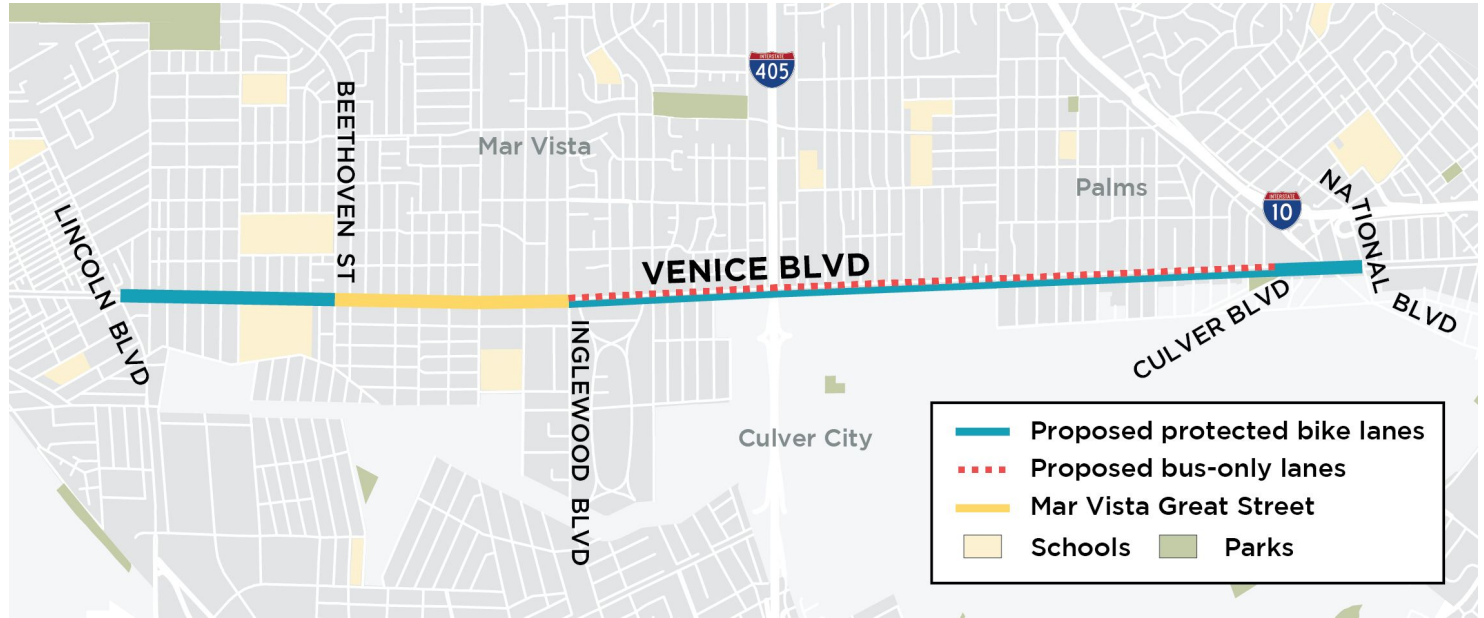
Project Area



Project Area Overview

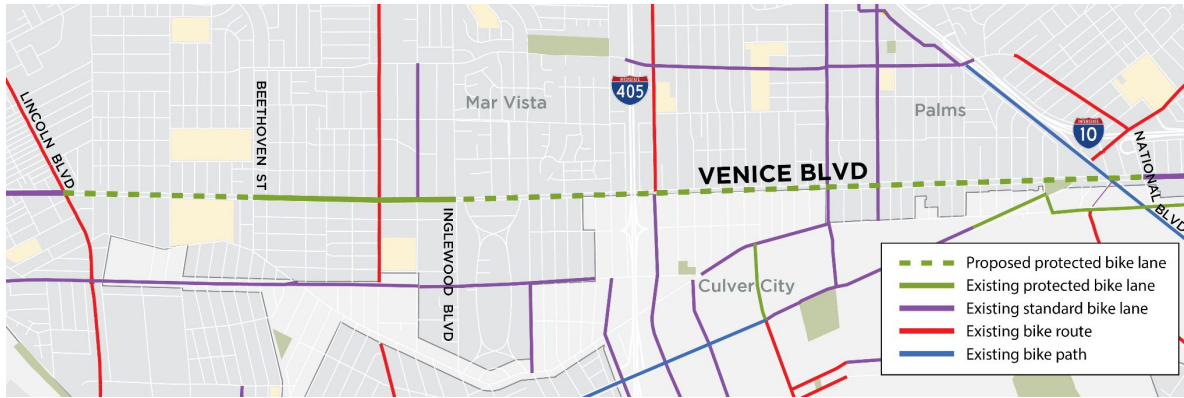
Proposed Project Area: Venice Blvd between Lincoln Blvd and National Blvd

4.5 miles

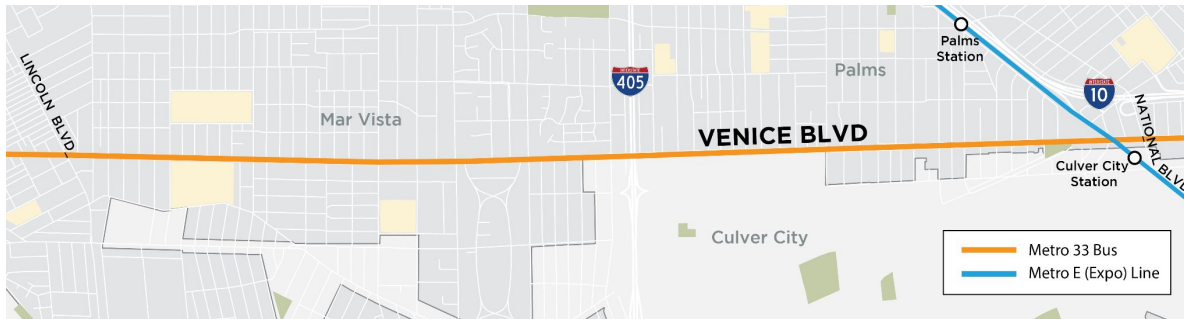


Bike and Transit Connectivity

Bicycle Network



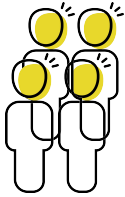
Transit Facilities



Existing Conditions



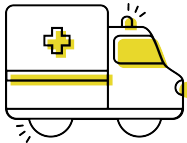
Traffic Safety 10 Year Data (2012-2022)



1205 Collisions



25% were walking or riding a bike



58 people were killed or severely injured



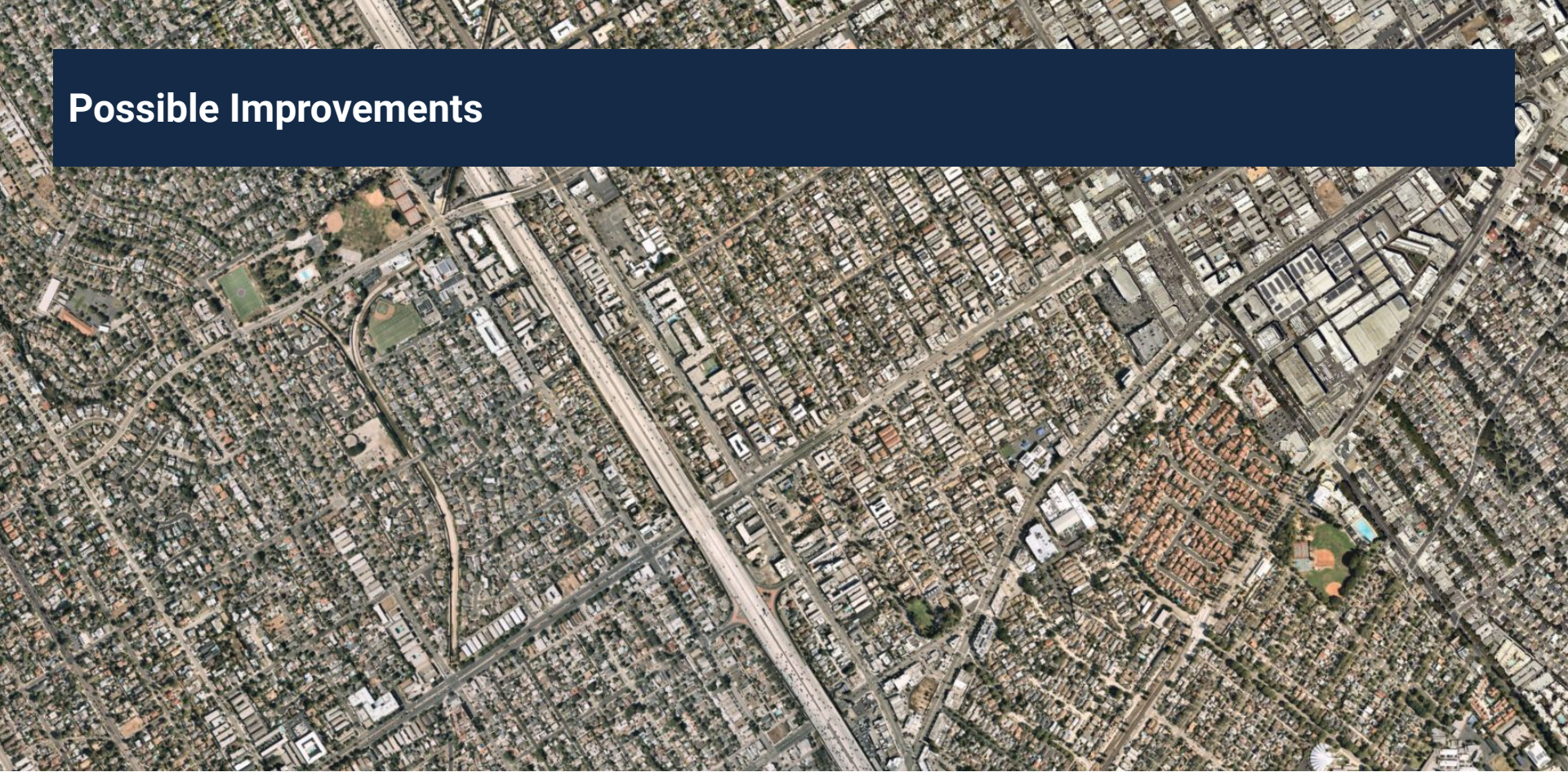
Venice Blvd Metro Ridership

Line 33 Customer Survey Results (Fall 2019)

- **19,500** daily weekday boardings
- **93%** are people of color
- **84%** in households making less than \$50k/year
- **82%** do NOT own a car and rely on bus service
- **98%** take Metro at least several times per week



Possible Improvements



Safety Improvements



**New protected bicycle/
mobility lanes**

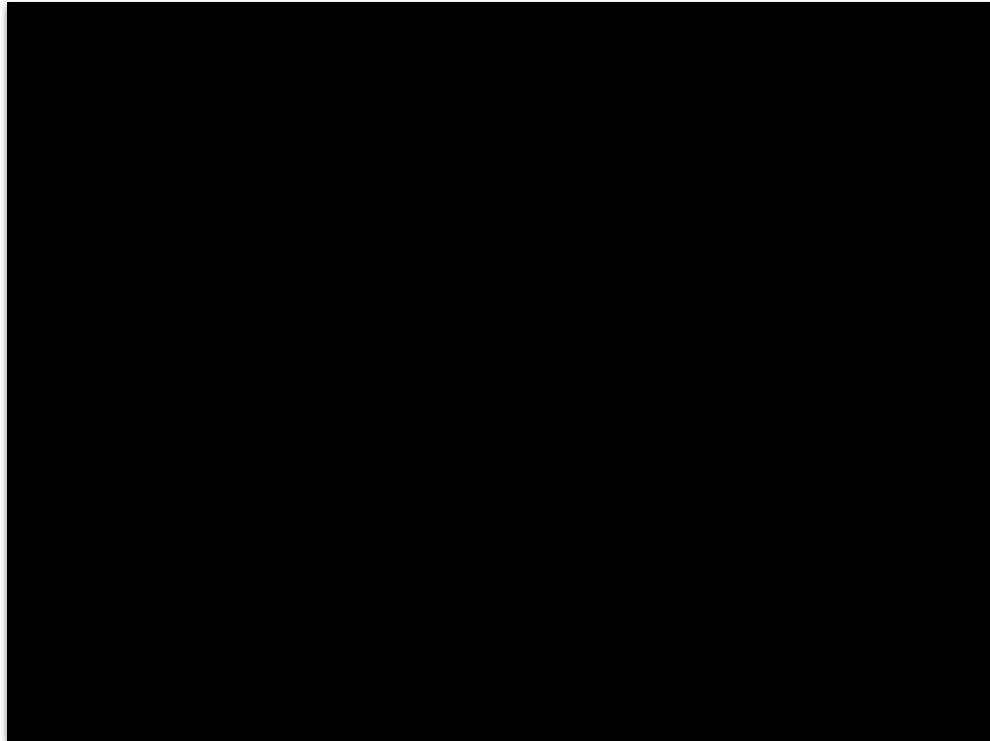


**Upgraded continental
crosswalks**



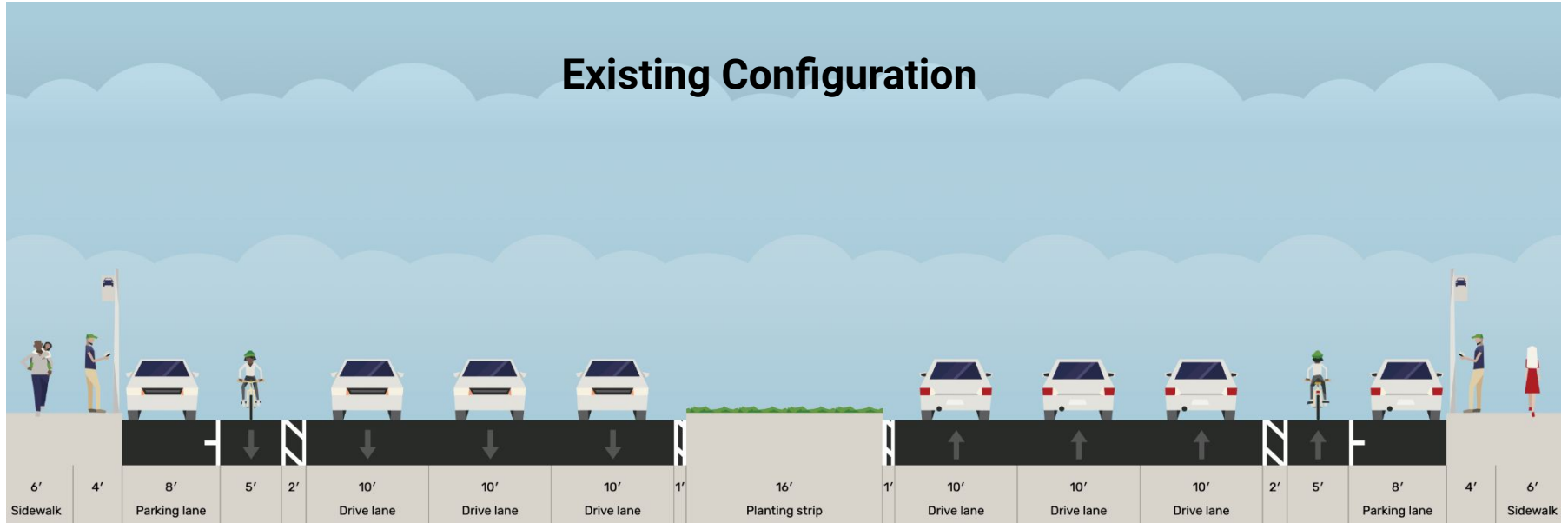
Venice Blvd Metro NextGen

- Improve bus speeds by 15% or more
- 15% - 20% expected increase in ridership as part of Metro's NextGen improvements



Venice Blvd Existing Configuration

Existing Configuration

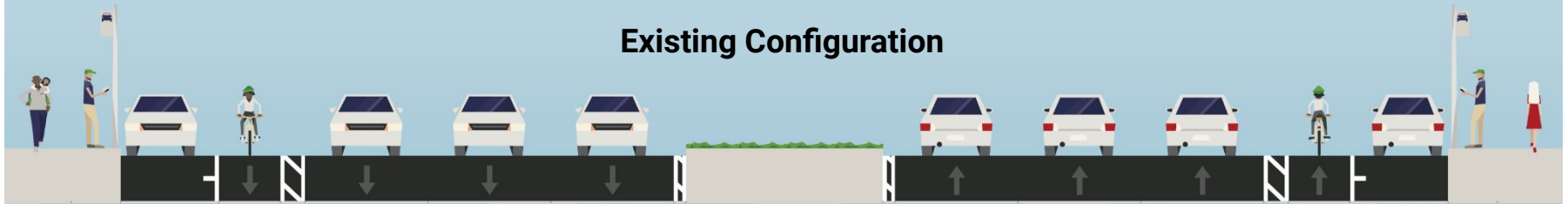


Parking | Striped bicycle lanes (2 ft buffer Culver- Motor) | 3 travel lanes each direction



Venice Blvd Proposed Configuration

Existing Configuration



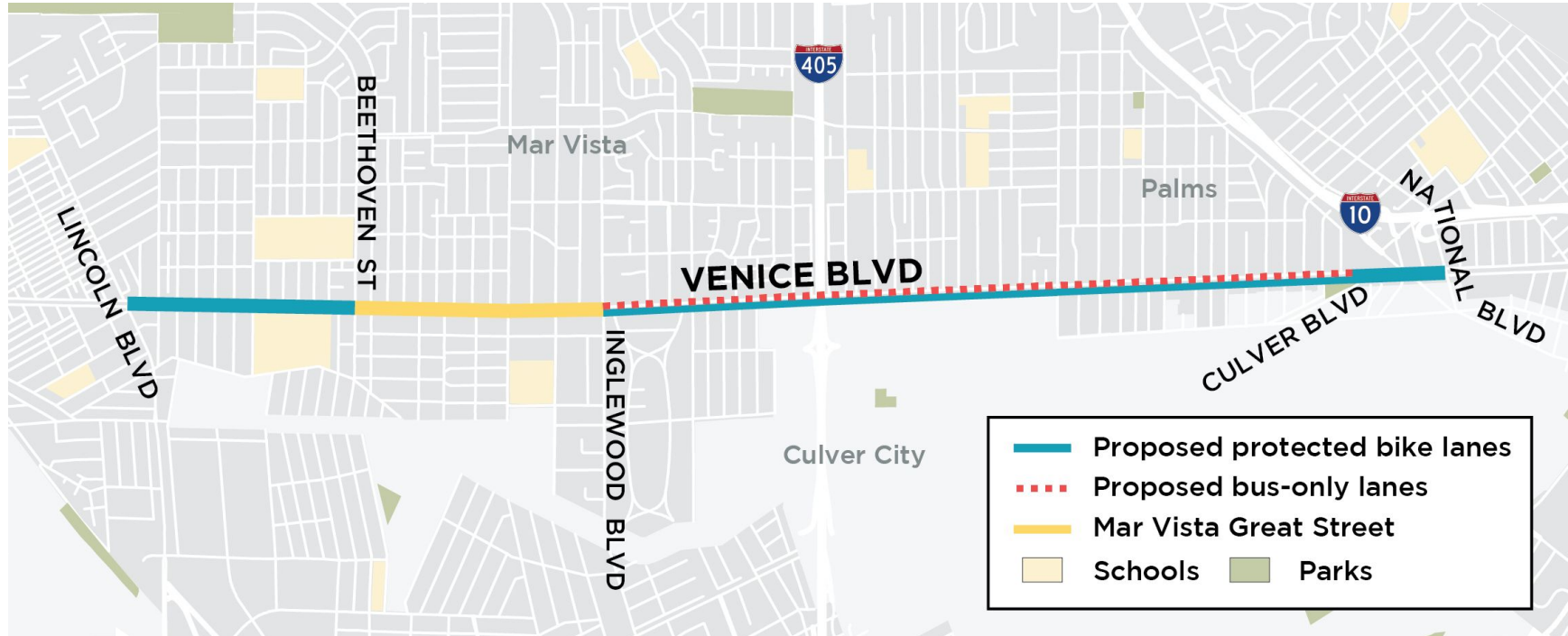
Lincoln to Beethoven



Bike and Bus Lane Segments



Venice Blvd Proposed Configuration



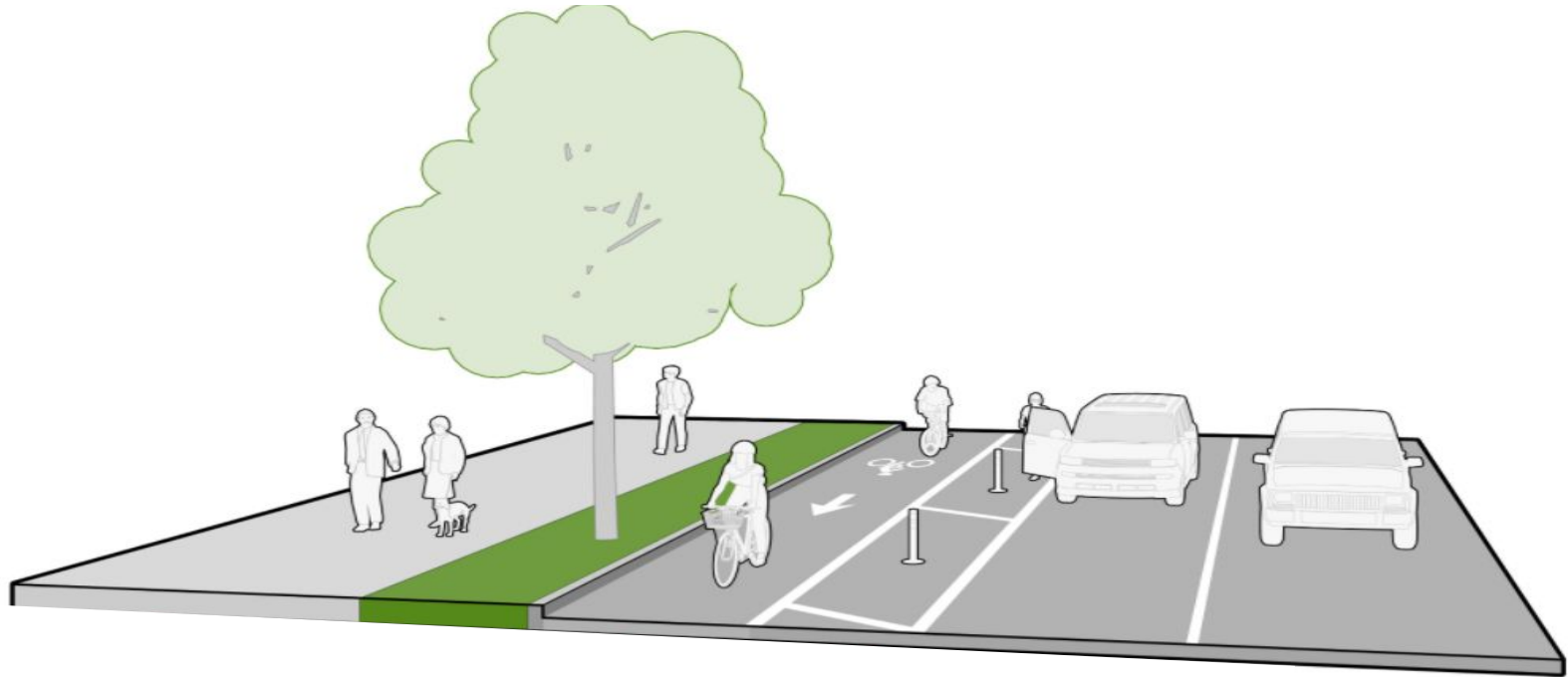
Venice Blvd Proposed Configuration



Credit: Veniceblvdforall



How Do Protected Bike Lanes Work?



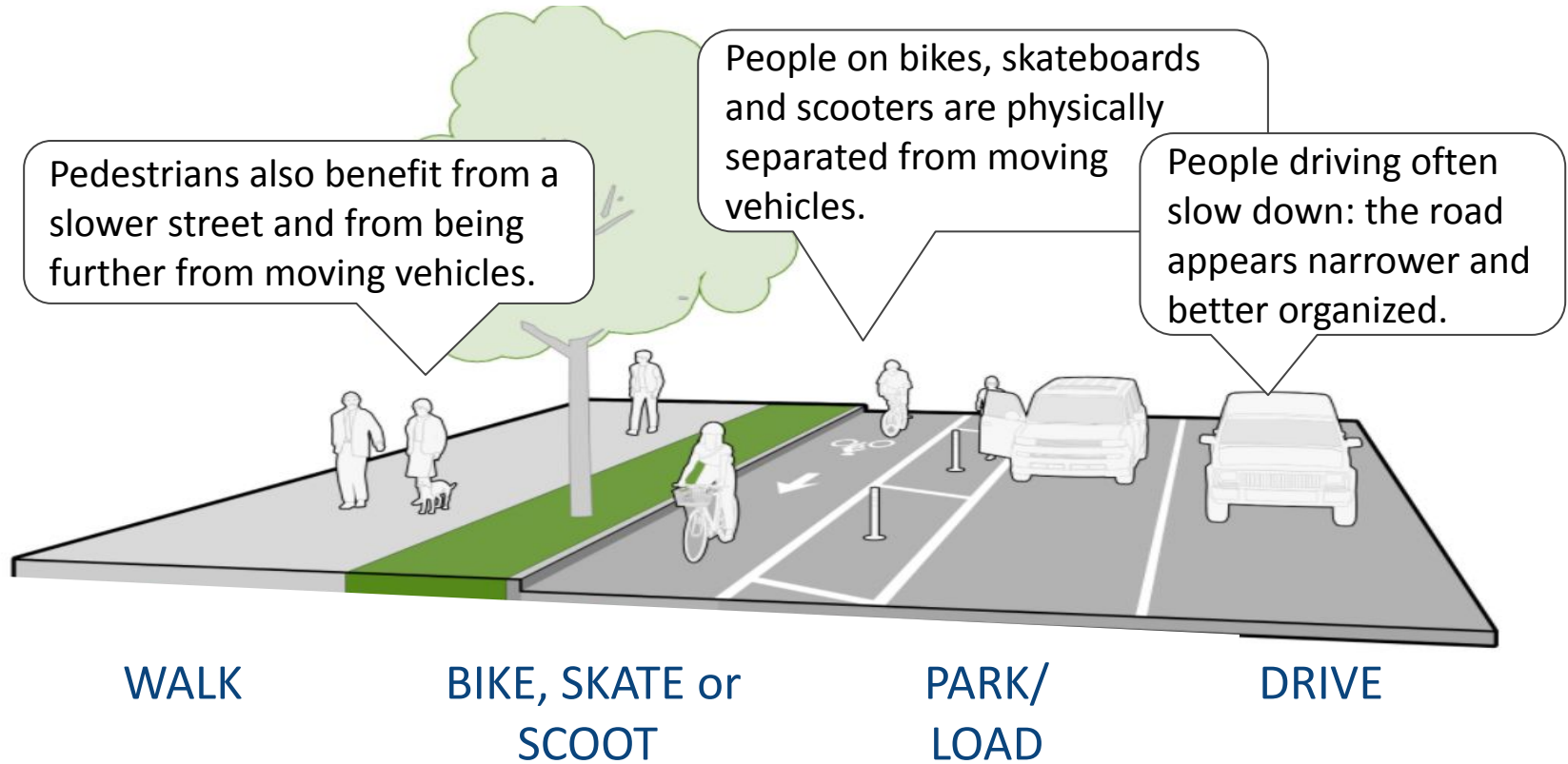
WALK

BIKE, SKATE or
SCOOT

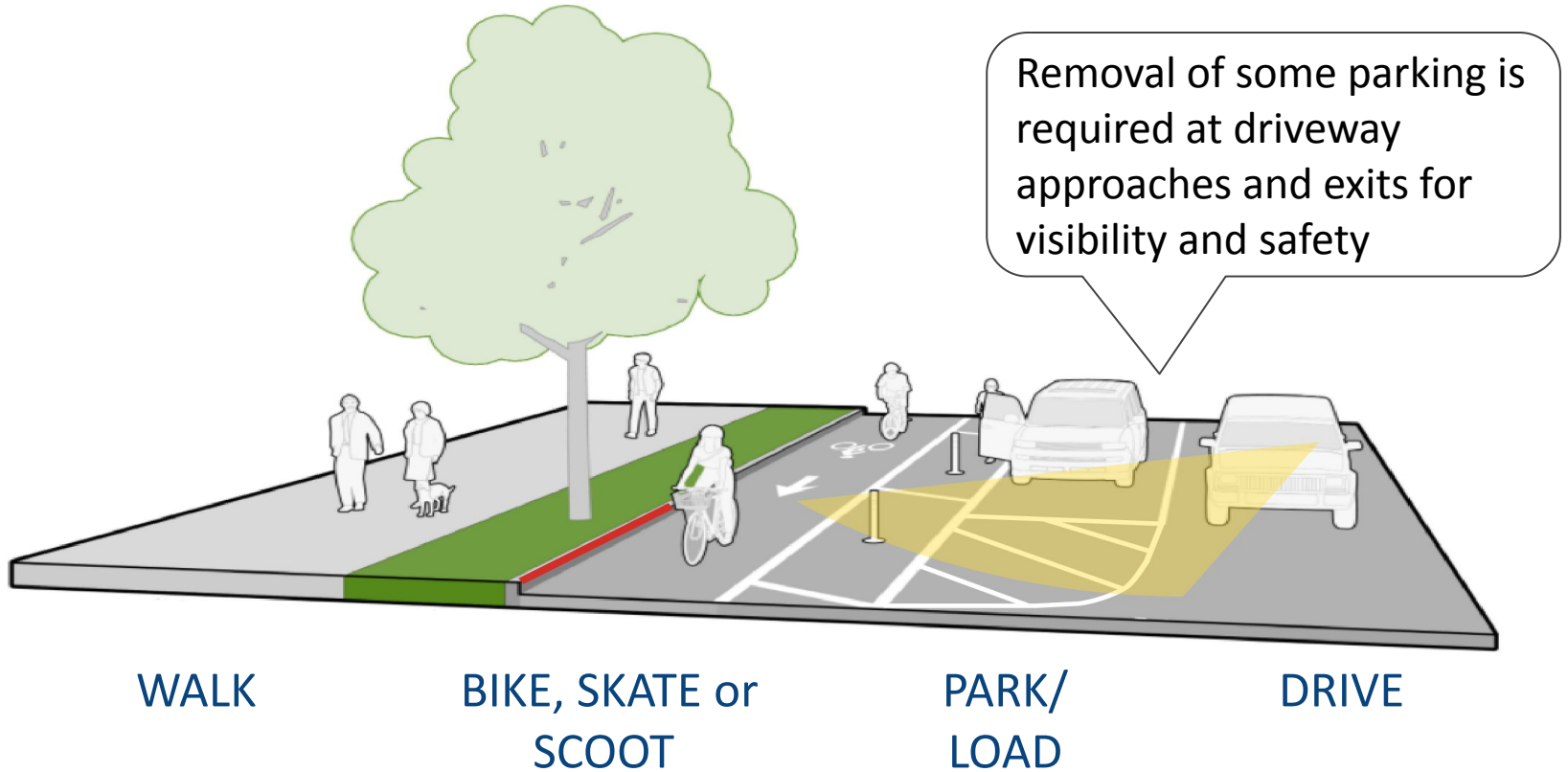
PARK/
LOAD

DRIVE

Why Are Protected Bike Lanes Safe?



Parking Considerations



Timeline & Community Engagement



Project Timeline

JUNE	JULY	AUG	SEPT	OCT	NOV
Preliminary Engineering, Data Collection + Analysis	Engagement			Final Design	Implementation
	<ul style="list-style-type: none"> Community briefings & survey launch 	<ul style="list-style-type: none"> Events, canvassing & on-the-ground outreach <p>Virtual Workshop 8/31</p>	<ul style="list-style-type: none"> Pop-ups, focus groups, continued meetings & on-the-ground outreach <p>Decision Point end of September</p>		



Venice Blvd Project Engagement

Tools & Activities - Spaces for Feedback

July through present:

- **Community briefings**
 - Schools, faith organizations, non-profits
- **Online community survey**
- **Online feedback map**
- **Canvassing/flyering**
 - Businesses along Venice Blvd
- **Bus rider surveys**
 - Metro Line 33
- **Community events**
 - Palms Neighborhood Walk-a-thon (8/13)
- **Newsletters, Emails and social media**
- **Community meetings**
 - Neighborhood Council
- **Interviews and testimonials**



Venice Blvd Project Engagement

Tools & Activities - Spaces for Feedback

Forthcoming through September:

- Ongoing
 - Community canvassing/flyering
 - Businesses along Venice
 - Neighborhoods surrounding Venice Blvd
 - Online community survey
 - Feedback map
 - Community events
 - Farmers markets, Fiesta La Ballona
 - Newsletters, Emails and social media
 - LANow, Metro Bike Share, local newsletters
- Bus stop canvassing
 - Beginning on 8/22
- Print mailer to 14,000 households (¼ mi) along the project area
- **Virtual Workshop – Save the date: August 31, 2022, 6:30pm**
- Community meetings
- On-street Pop-ups



Venice Blvd Project Engagement

Learn More & Get Involved:

Visit [LADOTLivableStreets.org/projects/venice](https://ladot.livablestreets.org/projects/venice)

- Take the project survey & sign up for updates
- Add your feedback to the Feedback Map →
- Contact us at ladot.active@lacity.org

The screenshot shows the LADOT website page for the Venice Boulevard Mobility Improvements project. The page features a navigation bar with links for ABOUT, OUR PROGRAMS, OUR PROJECTS, GET INVOLVED, and MAPS & DATA. The main content area includes a breadcrumb trail (Home / Our Projects / Venice Boulevard Mobility Improvements (Lincoln - National)), a section for ACTIVE TRANSPORTATION, and a title for Venice Boulevard Mobility Improvements (Lincoln - National). The page is divided into two columns: 'WHAT' and 'WHY'. The 'WHAT' section describes the project's goal to improve mobility on Venice Blvd from Lincoln Blvd to National Blvd. The 'WHY' section provides statistics on collisions and the benefits of the project. A sidebar on the left contains links for About, Feedback Map, and Contact Us. A 'Tell Us About This Area' form is visible, with fields for Maintenance, Street Enhancements, Transit, Signs, and Safety. A map of the Venice Blvd corridor is shown on the right, with a yellow banner above it that says 'Want to add a feedback?'.

LADOT
LIVABLE STREETS

ABOUT OUR PROGRAMS OUR PROJECTS GET INVOLVED MAPS & DATA

Home / Our Projects / Venice Boulevard Mobility Improvements (Lincoln - National)

ACTIVE TRANSPORTATION

Venice Boulevard Mobility Improvements (Lincoln - National)

WHAT
The City of Los Angeles and Metro are bringing mobility upgrades to Venice Blvd from Lincoln Blvd to National Blvd. This project proposes adding active transportation and bus improvements to increase comfort and safety for all who travel on Venice Blvd.

Share your feedback: [Take the online survey](#)

WHY
From 2012 to 2022, 1203 collisions occurred on this section of Venice Blvd. 25% of those involved people walking or riding a bike, and 58 people were killed or severely injured. We are redesigning our streets to prioritize human life.

We're also working with Metro to improve bus operations for the more than 19,000 people who board the bus daily. 84% of those are from households that make less than \$50k/year, and 82% do not own a car and rely on bus service.

Tell Us About This Area
People who live, work and play in the neighborhood know it best. Help us plan the best improvements for this corridor by identifying issues you encounter.

Maintenance

Street Enhancements

Transit

Signs

Safety

Want to add a feedback?

Feedback Map

Contact Us

LADOT

An aerial photograph of a city street grid, showing a dense network of roads and buildings. A major highway interchange is visible in the center-left. The image is used as a background for a presentation slide.

Questions?

THANK YOU!

Contact us at ladot.active@lacity.org
ladotlivablestreets.org